



**W Y R D**  
Research

# **Wyrdoscope data at Damanhur**

[gowyrd.org](http://gowyrd.org)



# Damanhur WyrDOScope Research

Tuesday 22nd - Wednesday 23rd April 2025

by Peter Merry, PhD

---

<b>Damanhur WyrDOScope Research</b>	<b>2</b>
Introduction	3
How does the WyrDOScope work?	3
Tuesday 22nd April	4
Walking the Spiral	4
Tuesday morning - Astral Travel training	5
Tuesday afternoon - Spaceship 2, talk, selfica interaction	6
Tuesday evening - Astral travel initiation	7
Wednesday 23rd April	8
Wednesday morning - activations and subtle visitors	8
Wednesday morning - Selfica paintings and Hall of Metals	9
Wednesday morning - Falco connection	10
Wednesday morning - music in the Hall of Metals	11
Wednesday afternoon - activations cont.	12
Wednesday evening - Hall of the Time of Peoples, music	13
Conclusion	14



## Introduction

This exploration was carried out at the Damanhur community and in the Temples of Humankind, on Tuesday 22nd and Wednesday 23rd April 2025. This was part of a training with a group of 11 people, led by Esperide Ananas. It involved having the Wyrdoscope present during the experiences across those two days. The event button was used to mark key moments in the data (red lines in the graphics below) and the metadata of the events was captured in a notebook, together with the local time. It was not designed to be a full scientific experiment and as such should be seen as an initial exploration which could be built on in more formal research.

The measure used is a probability score - the likelihood of the correlation between the data and the event being chance. The score for statistical significance is 2 sigma (a z-score of 2), which means a result is about 97.7% likely to be real and only about 2.3% likely to be due to random chance. In the analysis below we use the probability score (P-Score). That is equivalent to a probability score of 1:43. So anything above that is statistically significant.

## How does the Wyrdoscope work?

The Wyrdoscope contains two random event generators (REGs) which are generating lots of 1's and 0's using a quantum tunnelling effect. According to materialist physics, the quantum tunneling process itself is truly random and cannot be directly influenced. However, as initially demonstrated during 28 years of research at the Princeton Engineering Anomalies Research (PEAR) Lab, it turns out that people's intentions and our collective experience do indeed affect these devices in a statistically significant way.

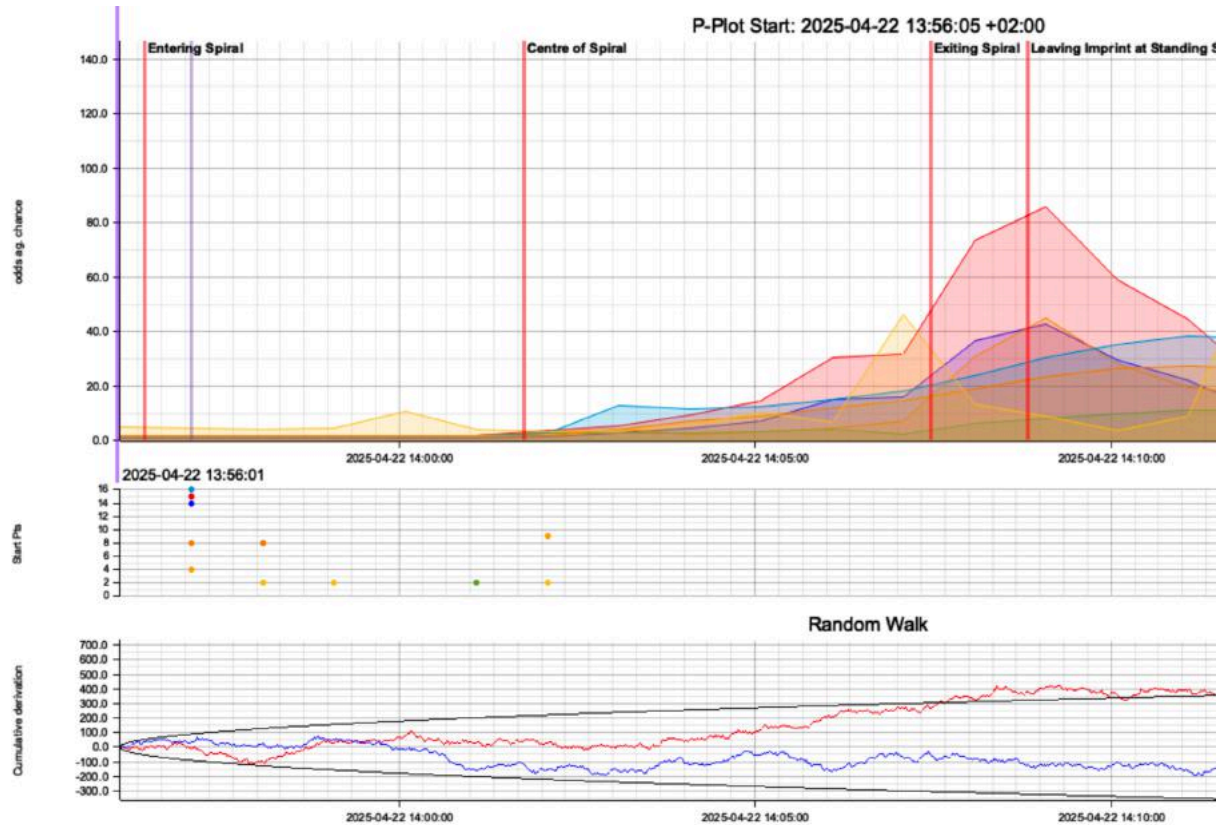
The uniqueness of the Wyrdoscope compared to the original PEAR devices is the combination of two REGs and the software that compares the data streams of the devices and looks for correlations between them. It looks at data from 6 different channels. That increases the data available to analyse and provides a more accurate way of identifying patterns in the data.

For more information about the Wyrdoscope, see <https://gowyrd.org/wyrdoscope-device/>, and on the analysis software used to generate this report see <https://gowyrd.org/wyrdoscope-software-suite/>.



# Tuesday 22nd April

## Walking the Spiral

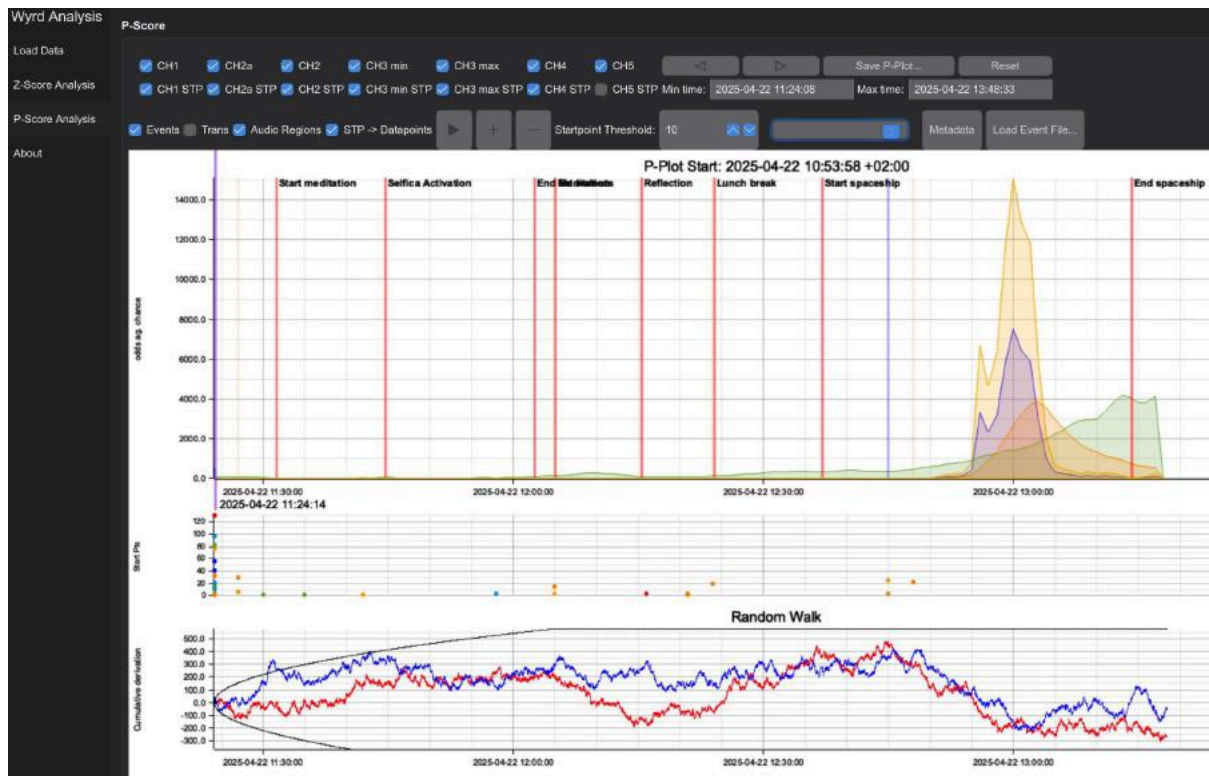


This experience involved walking the spiral and leaving my energetic imprint at the standing stone next to the spiral. What is interesting is how little happens until I reach the centre of the spiral. At that point the energy builds across multiple channels and continues to build until I exit the spiral (1:45). Leaving my imprint at the standing stone leaves the biggest effect (1:82).





## Tuesday morning - Astral Travel training



The graph above shows the whole of Tuesday morning. The large peak towards the end of the morning correlates with what Esperide called the spaceship exercise. During this exercise the participants, connected with their hands as one group, carried out an intense breathing practice and then collectively attempted to spiral out of their bodies into an astral dimension. There they allowed themselves to be guided to see what was most appropriate for them. The probability score during this exercise, which was the culmination of the morning's work, reached 1:14500.





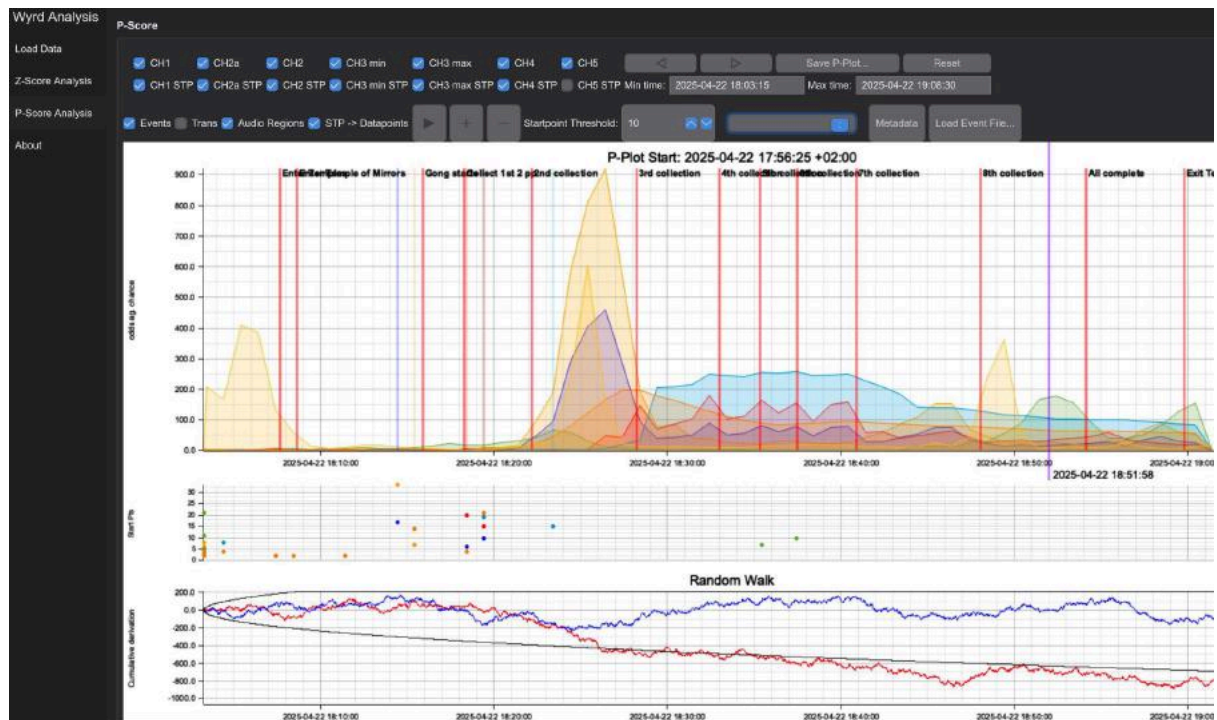
## Tuesday afternoon - Spaceship 2, talk, selfica interaction



On Tuesday afternoon the astral travel training continued with a second variant of the spaceship exercise, a talk from Esperide on the subtle body activation that would happen the next day, and individual interaction with a selfica device. The biggest peak in the first part of the afternoon correlates with the spaceship exercise and in particular the moment where participants were invited to return into their bodies (1:8000). The large peak towards the end correlates with the selfica interaction moment (1:18000).



## Tuesday evening - Astral travel initiation



On Tuesday evening, individuals were given an activation for astral travel. The group was based in the Hall of Mirrors in the Temples of Humankind. For the activation each person went down to a special location next to the room of selfica paintings. These are the correlations with the key peaks in the data:

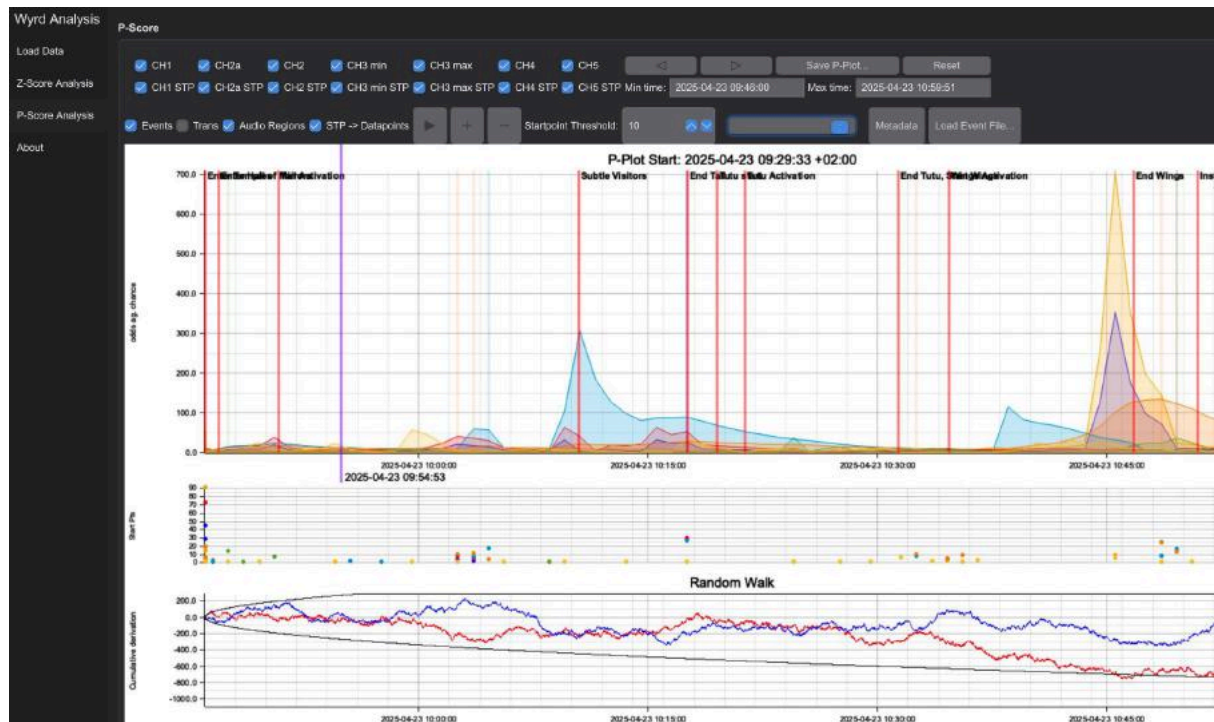
- Before entering the Temples, the Wyrdscope was taken away for a moment to be energetically aligned with the Temples. That moment can be seen at the peak on the left (1:400).
- The biggest peak at the centre aligns with the moment that Esperide activated the Temples for this specific astral travel activation (900:1). Following that activation there appears a relatively stable field indication by the blue block (1:250).
- The waves of smaller peaks parallel with the blue block reflect the moments of the individual activations (1:150).
- The yellow peak at 18.50 correlates with the moment that Esperide closed the activation for the Temples (1:350).





## Wednesday 23rd April

### Wednesday morning - activations and subtle visitors



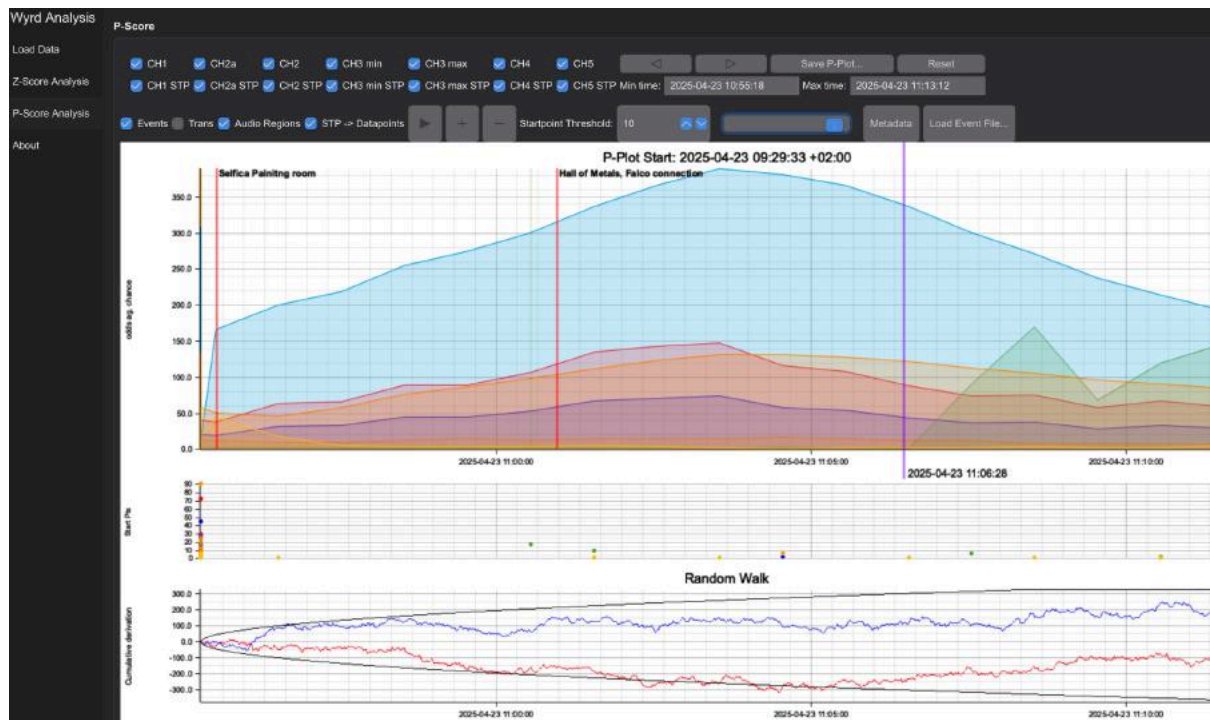
The graph covers the first part of Wednesday morning, spent in the Hall of Mirrors. The morning was a series of three subtle body activations, related to the first four chakras. The first activation was for the first two chakras, giving three activations in total. The blue peak in the middle was a particular moment when Esperide noticed that we had some visitors in the subtle field and invited us to connect to them (1:300). The peak towards the end of the morning correlates with the moment of finalising the heart chakra activation (1:700).







## Wednesday morning - Selfica paintings and Hall of Metals

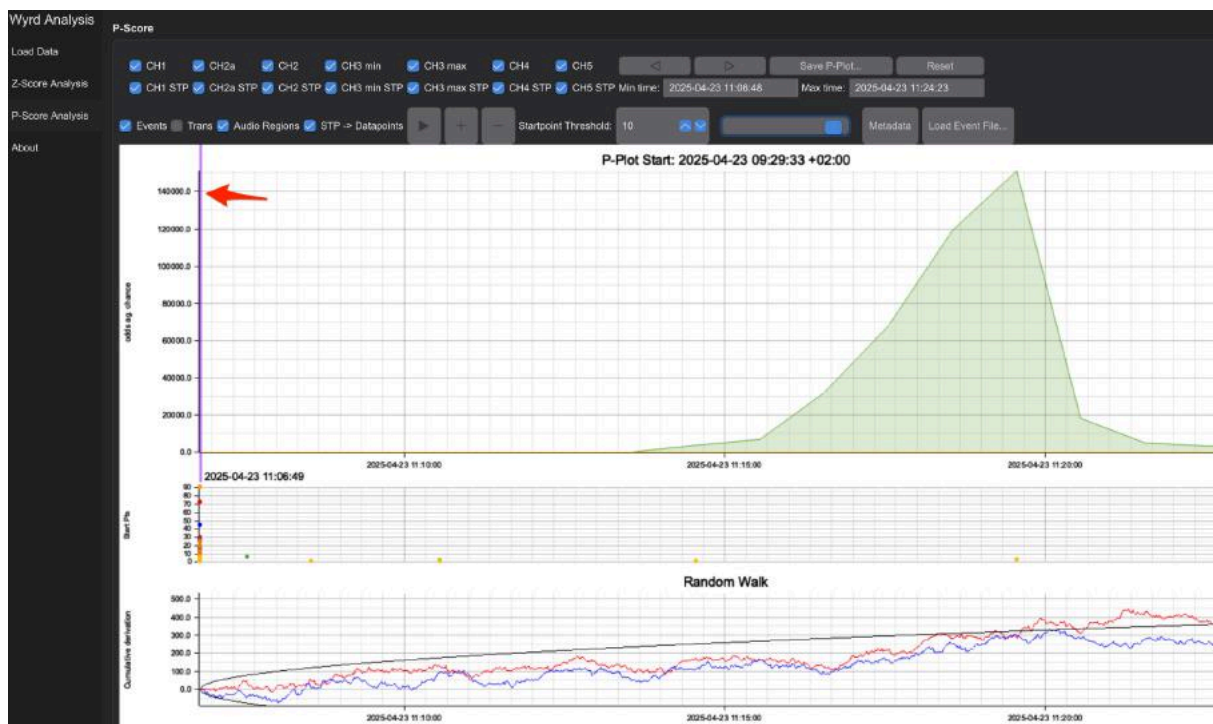
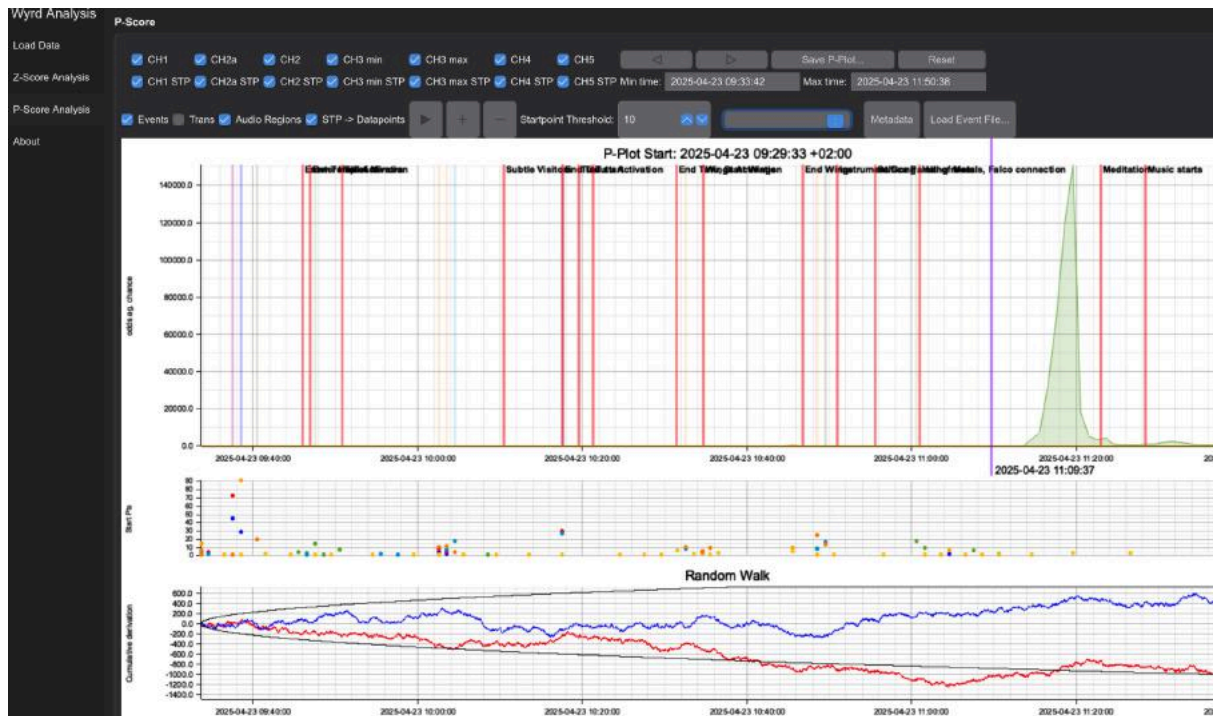


The second part of the morning was spent experiencing different Halls in the Temples. This graphic shows the moments we entered a room with selfica paintings on the walls, and then moved into the Hall of Metals (1:375).





## Wednesday morning - Falco connection



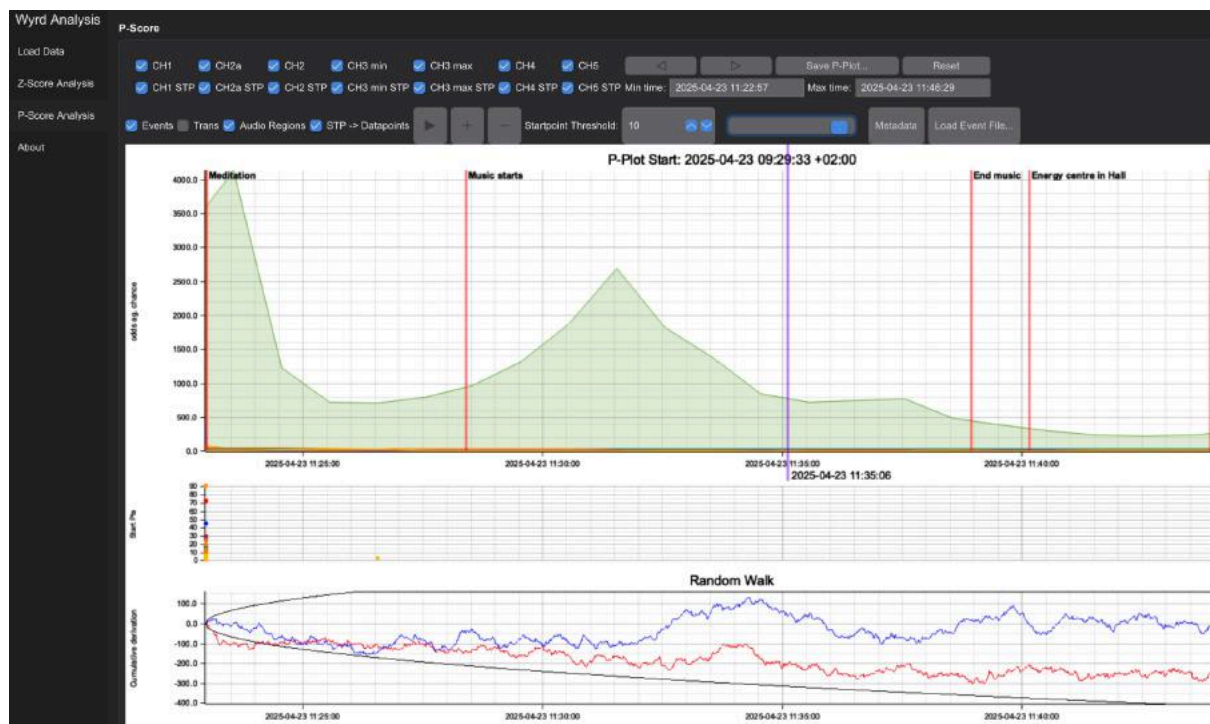
The two graphs show the same moment, the top one in the context of the whole morning. The peak has a probability score of 1:140000, dwarfing all the other events of the morning. This moment correlated with a connection I had with an image of Falco, the Damanhur founder, in the Hall of Metals. I experienced it as glowing and it held me in its gaze for about 30 seconds.







## Wednesday morning - music in the Hall of Metals

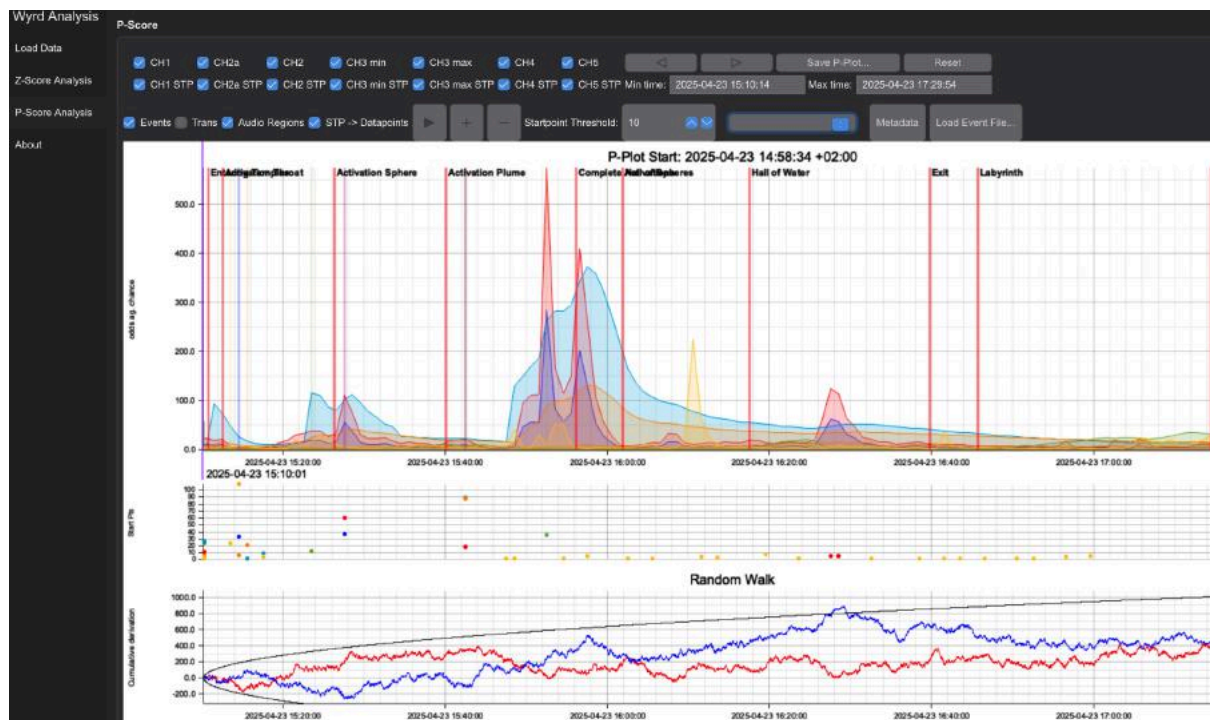


To end the morning, Frankko performed his voice-based music for the group. A meditation preceded the music. The peak in the middle correlates with the midpoint of Frankko's performance (1:2700). The symmetry of the peak is interesting in the context of a performance building, peaking and then completing.





## Wednesday afternoon - activations cont.



On Wednesday afternoon, the activations continued for the last three chakras. The blue peaks early on correlate with the first two activations (1:100) and the peak in the middle correlates with the activation of the 7th chakra and invitation to integrate all the activations (1:550).

We then visited and meditated in the Hall of Spheres (1:200) and Hall of Water (1:120).







## Wednesday evening - Hall of the Time of Peoples, music



In the evening we visited the Hall of the Time of Peoples. There Frankko once more graced us with his music. The peak is this time towards the end of his performance (1:2250).

Following the concert, Esperide invited us to connect to the imagery on the wall that Falco had created, and find something that we felt could help guide us in the future. That moment correlates with the peak in the data below (1:1400).





## Conclusion

It is important once more to acknowledge that this was an informal exploration, not a formal scientific research project.

These explorations do show significant correlations between the patterns across the random data streams and the moments experienced as most powerful for the group over the two days. They reflect many of the structured rituals that make up the training and activation process.

These results certainly provide good reason to further explore events carried out at the Damanhur community and in the Temples of Humankind, to see what impact they have on the WyrDoscope data. A proper research project following standard protocols could provide useful evidence of the effects of these programmes at Damanhur.

*Peter Merry, 26th April 2025*